

# Genesis Medical Center Davenport and Silvis Community Health Needs Assessment Implementation Strategies Fiscal Years FY 2022 – 2024

Genesis Medical Center Davenport (GMC Davenport) and Genesis Medical Center Silvis (GMC Silvis) completed a comprehensive Community Health Needs Assessment (CHNA) in collaboration with multiple community stakeholders that was adopted by the Genesis Board of Directors on August 4, 2022. Genesis performed the CHNA in adherence with the applicable federal requirements for not-for-profit hospitals as set forth in the Affordable Care Act (ACA) and by the Internal Revenue Service (IRS). The assessment took into account a comprehensive review of secondary data analysis of patient outcomes, community health status and social determinants of health. In addition, primary data was gathered via a series of focus groups which solicited input from community members and various community organizations.

The complete CHNA electronic report is available on the Genesis Health System website (add link once approved). Printed copies are available at Genesis Medical Center Davenport, East Campus 1227 E. Rusholme Street, Davenport, Iowa, 52803, administration office as well as the administration office at Genesis Medical Center Silvis, 801 Illini Drive, Silvis, Illinois 61282.

## Hospital Information

### Definition of the Service Area

GMC Davenport (Scott County) and GMC Silvis (Rock Island County) serve a six county, bi-state region. The six counties and the percentage of patients from each are shown below. Approximately 90% of patients for the two hospitals come from this service area (the threshold for a true service area is 90%).

<b>Table 1 - GMC Davenport and Silvis Inpatient Origin 2022</b>			
<b>County</b>	<b>Number of Patients</b>	<b>Percent of Total</b>	<b>Cumm. Percent</b>
Scott County, IA	10,272	58%	58%
Rock Island, IL	3,307	19%	77%
Clinton, IA	1,165	7%	83%
Henry, IL	594	3%	86%
Muscatine, IA	352	2%	88%
Mercer, IL	350	2%	90%
Jackson, IA	347	2%	92%
Whiteside, IL	293	2%	94%
All Other	1,056	6%	100%
<b>Total</b>	<b>17,736</b>	<b>100.0%</b>	

Source: *Intellimed*

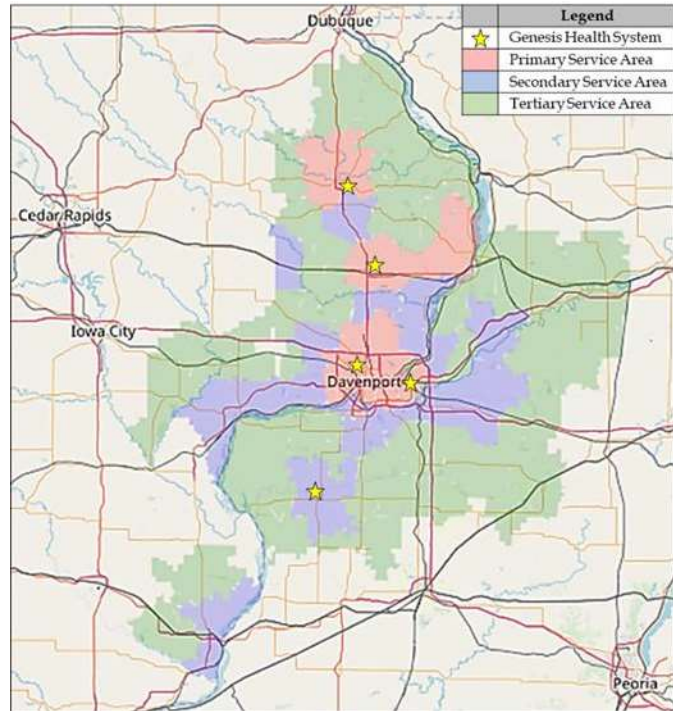
## Services Provided by Genesis Medical Center Davenport and Genesis Medical Center Silvis

### GMC Davenport

GMC Davenport, Scott County, Iowa, consists of two hospitals: one located at the East Campus and one on the West Campus. While there are two hospitals, GMC Davenport operates under a single hospital license with 502 licensed beds.

The East Campus is the main hospital campus with the majority of inpatient and outpatient services. The East Campus services include:

- Emergency Department and Level III Trauma Center
- Ambulance services (provided through Medic EMS)
- Obstetrics – Davenport BirthCenter
- NICU Level II
- Perioperative services – preadmission, same day surgery (Outpatient Care Center) 12 state of the art operating rooms for inpatient and outpatient surgeries (including endoscopies), recovery area and post-surgical care beds.
- Cardiovascular and thoracic services including cardiac catheterization labs for EP, interventional procedures, TAVRs and open heart surgeries.
- Inpatient units – orthopedics, pediatrics, medical/pulmonary, neurology/oncology combined floor, surgical intensive care unit, ICU and Cardiac Intensive Care unit as well as an observational/short stay unit.
- Outpatient services – cardiac rehabilitation, physical therapy, speech and occupational therapies
- Genesis Kenneth H. McKay MD Center for Breast Health
- Center for Weight Management
- Pain management services
- Inpatient and outpatient radiology and lab
- Inpatient and retail pharmacy
- Materials management



The East Campus also provides office space for specialists and primary care providers in two medical office buildings and the Genesis Heart Institute.

The West Campus provides clinical space for inpatient behavioral health, inpatient rehabilitation plus outpatient therapies (speech, physical and occupational therapies), sleep studies, Wound and Hyperbaric Institute and outpatient cancer center (medical and radiation therapy oncology). The West Campus is approximately two to three miles from the East Campus.

There is an off-campus ED, which is part of GMC Davenport, located in the Bettendorf Healthplex.

## GMC Silvis

GMC Silvis is an acute care hospital located in Silvis, Illinois, Rock Island County, providing primary and secondary inpatient and outpatient services. Services include:

- Emergency Department. The ED is designated as Pediatric Emergency Center and Level II Trauma Center by the State of Illinois.
- Genesis Ambulance service
- Inpatient medical and surgical services
- Silvis BirthCenter
- Special Care Nursery Level II
- ICU
- Interventional cardiac catheterization
- Outpatient chemotherapy
- Same day surgery
- Outpatient cardiac rehabilitation and physical therapy
- Sleep lab
- Center for Breast Health
- Inpatient and outpatient radiology, lab and pharmacy

GMC Silvis shares its campus with Illini Restorative Care (part of the joint venture with Wesley Life) and Crosstown Square (an independent living facilities for older adults) as well as the Larson Center, a medical office building.

### Genesis Mission Vision and Values

Mission – Genesis Health System exists to provide compassionate, quality health services to all those in need.

Vision – Genesis will be a national leaders in health care quality and safety, recognized by all as the best place in the region to receive care, practice medicine and work.

Values – Safety, Integrity, Compassion, Accountability, Respect and Excellence

## Population Demographics and Social Determinants of Health

### Population:

The primary service area has a population of approximately 318,205 people. The population is projected to remain relatively flat over the next five years.

<b>Table 2 – Primary Service Area Population</b>				<b>Percent Change</b>	
<b>Primary Service Area</b>	<b>2010</b>	<b>2022</b>	<b>2027</b>	<b>2022-2027</b>	<b>2010-2027</b>
Scott County (IA)	165,224	174,034	178,482	+2.1%	+8%
Rock Island County (IL)	147,613	144,171	140,564	- 2.5%	-5%
<b>Total</b>	<b>312,837</b>	<b>318,205</b>	<b>319,046</b>	<b>0.3%</b>	<b>+2%</b>

Source: 2101 US Census and The Advisory Board Demographic Profile

Age:

- In comparison to state and national data, the service area tends to have a greater number of people 65 years of age and older. The greatest percentage of older adults (65+) resides in Rock Island County.
- The median age in Scott County is 38.1 as compared to Rock Island County’ median age of 40.0. The median ages for Iowa and Illinois are 38.2 and 38.1 respectively.

Race and Ethnicity:

- The service area is predominately white: Scott County 85%, Rock Island County 80.2%. In Scott County, 7.5% of the population is Black, 3.8% identify as some other race and 3.1% report being multiple races. In Rock Island County, 10.4% of the population is Black, 5.7% identify as some other race and 3.7% are multiple races.
- In terms of ethnicity, 6.7% of Scott County residents report being Hispanic or Latino as compared to 12.9% in Rock Island County.

Population in Poverty:

<b>Table 3 – Percent of Population Living Below Poverty</b>		
	<b>Scott County</b>	<b>Rock Island County</b>
Total Population	12.1%	14.0%
Children (ages 0 -17)	16.6%	22.4%

Source: PRC CHNA Report Scott, Muscatine, and Rock Island Counties

Education:

- The population (ages 25+) with no high school diploma is 7.2% for Scott County and 11.4% for Rock Island County.

Housing:

- In Scott County, 16.1% of the PRC survey respondents indicated that they lived in unhealthy or unsafe housing conditions in the past year versus 13.4% of Rock Island County respondents. Living in unhealthy or unsafe conditions is higher for low income persons (33.9%) and for black persons (26.6%).
- Lead paint and pipes the area’s older homes is another concern. Three percent of the area residents (Scott and Rock Island Counties) have been informed that their house contains a lead hazard; of these adults, 70.3% report that the hazard has been removed.

Homelessness:

- Almost 4% of Scott County and 4% of Rock Island County respondents indicated that they were homeless at some point during the past two years. Homelessness has increased from less than 1% in 2007 to 3.7% in 2021.

Access to Food and Food Insecurity:

- According to the US Department of Agriculture, 15.5% of the combined Scott and Rock Island Counties have low food access –i.e. live more than half a mile from the nearest supermarket or large grocery store.

- In Scott County, 22.7% are food insecure (either have run out of food in the past year or have been worried about running out of food) as compared to 28.0% in Rock Island County.

**Health Needs of the Community**

The CHNA identified the health care needs within our community as shown below. These health needs were prioritized by 49-stakeholders over four meetings based on criteria such as score, severity and ability to impact.

Table 4 - Health Care Needs	Scope & Severity	Ability to Impact	Average
Mental Health	8.67	7.42	8.04
Nutrition/Physical Activity/Weight	8.27	6.96	7.61
Diabetes	7.89	7.11	7.50
Access to Health Care Services	7.44	6.78	7.11
Heart Disease/Stroke	7.76	6.47	7.11
Infant Health/Family Planning	6.67	6.96	6.82
Substance Abuse	7.08	6.51	6.80
Injury/Violence	6.60	5.38	5.99
Oral Health	5.96	5.89	5.92
Respiratory Disease	6.27	5.38	5.83
Cancer	6.53	4.89	5.71
Kidney Disease	5.70	4.94	5.32

*Source: November Stakeholder Meeting 2021*

**GMC Davenport and GMC Silvis Implementation Strategies**

The resources of the two hospitals, feedback from the community and the Genesis strategic priorities were considered by the Genesis Board of Directors Community Benefit Advisory Committee as the identified health needs were reviewed and selected for improvement initiatives.

**Significant health needs to be addressed**

GMC Davenport and Silvis will focus on developing and/or implementing initiatives and measure their effectiveness, to improve the following health needs:

- Infant Health – Reduce the number of low birth weight infants – page 8
- Mental Health - page 11

- Nutrition, Physical Activity and Weight/Diabetes Care – page 14
- Access to Health Care Services – page 15

### **Significant needs that will not be addressed**

GMC Davenport and Silvis are aware that there are many health issues and needs that were identified during the CHNA process. The Genesis of Directors Community Benefit Advisory Committee determined that the organization could effectively focus on four health needs which were felt to be the most important and within our ability to influence.

GMC Davenport and Silvis will not take action on the following health care needs:

- Heart Disease/Stroke – GMC Davenport and Silvis do not plan to directly address this particular need but will continue to provide diagnostic services, cardiovascular and thoracic care treatment and rehabilitation therapies through the Genesis Heart Institute and the two hospitals. Both hospital will also continue to work closely with area health care providers and organizations to provide community education re ways to prevent heart disease and stroke.
- Substance Abuse - GMC Davenport and Silvis do not plan to directly address this particular need. Our staff will continue to work with area substance abuse prevention and treatment programs to address substance abuse needs in our community.
- Injury/Violence - GMC Davenport and Silvis do not plan to directly address this particular need because there are several key community efforts underway to address this issue. We will continue to work with these groups, such the Davenport Mayor’s Violent Crime Community Task Force, and the Rock Island County Children’s Advocacy Center.
- Oral Health - GMC Davenport do not plan to directly address this particular need because it is not one of the top three needs identified. We will support our local federally qualified health care center as they work to ensure proper oral health for those in need.
- Respiratory Disease - GMC Davenport and Silvis do not plan to directly address this particular need because it is not one of the top health needs. We will continue to provide prevention and treatment through our Genesis Health Group primary care providers and pulmonologists.
- Cancer - GMC Davenport and Silvis do not plan to directly address this particular need. There are three health care organizations providing cancer diagnostic services, treatment and rehabilitation in this community. We will continue to provide community education and prevention in addition to the medical oncology and radiation oncology services.
- Kidney Disease - GMC Davenport and Silvis do not plan to directly address this particular need as it is not one of the top health needs identified. Genesis will continue to work with local groups focusing on the prevention of kidney disease among low income and black populations.

This implementation strategy identifies community health needs that GMC Davenport, GMC Silvis and Genesis Health System have decided to address in whole or in part and that are consistent with our mission. Genesis reserves the right to amend this implementation strategy as circumstance indicate. If, during these three years, other community organizations decide to address particular needs, then Genesis may refocus its limited resources to meet other needs identified during the CHNA process.

## CHNA IMPLEMENTATION STRATEGY

### Fiscal Years 2022 - 2024

<b>Hospital Facility:</b>	<b>GMC Davenport and GMC Silvis</b>
<b>CHNA Significant Health Need: Infant Health – Reduce the number of low birth weight babies in Scott and Rock Island Counties</b>	
<b>CHNA Reference: Page 144</b>	<b>Prioritization #: 1</b>

**Brief Description of Need:**

- The CHNA survey found that 7.6% of births in Scott County and 7.6% of the births in Rock Island County were low birth weight babies.
- Low birth weight babies (babies weighing less than 2,500 grams or 5 pounds, 8 ounces at birth) may be at greater risk of death, for infections and impaired development (e.g. delayed motor or social development skills or learning disabilities). This is a preventable issue.
- Contributing factors include: lack of or delayed prenatal care, substance abuse and age of the mother, to name a few. The CHNA found that 17.3% of the women in Scott County and 24.2% of the women in Rock Island County did not receive care in their first trimester of pregnancy. The ease of obtaining prenatal/postnatal care is “fair/poor for women age 18-49 with 11.9% reporting difficulties obtaining care. This is particularly a problem for low income, minority women.

**Goal:** To reduce the incidence of low birth weight babies in Scott and Rock Island Counties particularly among low income and minority women.

**Phases of Implementation:**

- Phase 1 – The Quad City Health Initiative forms a community task force consisting of representatives from the Genesis Health System OB department, UnityPoint Health System, Community Health Care, Rock Island County Health Department and Scott County Health Department by December 2022. This group develops the initial plan. This phase will determine the local scope, disparities and focus on data collection and analysis.
- Phase 2 – The first draft of the plan and approach is shared with local stakeholder organizations such as Scott County Kids, Every Child, Scott County Medical Society, DCFS, local OB/GYN providers, regional providers, etc for review and their input. Complete by September 2023.
- Phase 3 – Funding and resources are secured for implementation. December 2023.
- Phase 4 – Implementation - ongoing
- Phase 5 – Evaluation – end of year 3.

**Impact Measures: GMC Davenport and GMC Silvis**

CHNA Impact Measures	CHNA Baseline	Target
Reduce the percentage of low birth weight babies in Scott and Rock Island Counties	7.6% Scott County 7.6% Rock Island County	Achieve a percentage of 4%
Number of people educated	Establish baseline	Increase 10% from baseline

**Actions GMC Davenport intends to take to address this health need:**

Strategies	Timeline			Committed Resources		Potential Partners
	Yr1	Yr2	Yr3	Hospital	Other Resources	
Provide support to the QCHI task force	X	X	X	Fund staff time and operational support		QCHI Community Health Care Scott & Rock Island County Health Depts Community Health Care Local health care providers
Provide education and information to key populations most likely to be affected by factors contributing to low birth weight	X	X	X	Fund staff time and operational support	Leverage informational materials from MercyOne Grow Baby Grow program and other resources	MercyOne Grow Baby Grow
Work with area health care providers to address barriers to prenatal care	X	X	X	Work with GHG OB and Family Medicine physicians and APPS to identify patients at risk and help resolve barriers	Provide meeting space for training – e.g. provide space for the Black Doulas training others	Community Health Care physicians and APPS Heart of Hope Ministries Lincoln Center Riverbend Food Bank Black Doulas Project
Continue to work with the QC Live Lead Free Coalition to identify and remediate lead hazards in low income homes esp those with infants, toddlers and pregnant moms	X	X	X	Serve on the Coalition’s Board		QC Live Lead Free Coalition Local city and county government Scott County Health Dept.
Monitor outcomes	X	X	X			



**Actions GMC Silvis intends to take to address this health need:**

Strategies	Timeline			Committed Resources		Potential Partners
	Yr1	Yr2	Yr3	Hospital	Other Resources	
Provide support to the QCHI task force	X	X	X	Fund staff time and operational support		QCHI Scott & Rock Island County Health Depts Community Health Care Local health care providers
Provide education and information to key populations most likely to be affected by factors contributing to low birth weight	X	X	X	Fund staff time and operational support	Leverage informational materials from MercyOne Grow Baby Grow program and other resources	MercyOne Grow Baby Grow
Work with area health care providers to address barriers to prenatal care	X	X	X	Work with GHG OB and Family Medicine physicians and APPS to identify patients at risk and help resolve barriers		Community Health Care physicians and APPS Heart of Hope Ministries Riverbend Food Bank
Monitor outcomes	X	X	X			

**Plan to evaluate the impact:**

Genesis will keep a record (annual) of the meetings held by the QCHI task force. At the end of each year, the QCHI task force will evaluate their success and identify opportunities for improvement. Based on this information, modifications to the plans will be made.

## CHNA IMPLEMENTATION STRATEGY Fiscal Years 2022 - 2024

<b>Hospital Facility:</b>	<b>GMC Davenport and GMC Silvis</b>
<b>CHNA Significant Health Need:</b>	<b>Mental Health</b>
<b>CHNA Reference: Page 79</b>	<b>Prioritization #: 2</b>

**Brief Description of Need:**

- The CHNA results indicate that 22.2% of the respondents in Scott County and 24.0% of the Rock Island County respondents reported their mental health status to be “fair” or “poor”. This measure has increased significantly from 8.9% in 2007 to 23.1% in 2021 (Quad Cities area).
- Forty-two percent (42.0%) of Scott County respondents indicated that they had experienced symptoms of chronic depression as compared to 43.5% of Rock Island respondents. These measures are significantly higher than that of the US (30.3%). This measure has increased from 25.2% in 2002 to 42.7% in 2021 (Quad Cities area).
- The CHNA survey found that 8.2% of parents of children between the ages of 5 and 17 reported that their child’s mental health was “fair or poor” in 2015 versus 16.5% in 2021. 27.8% of parents reported that their child needed mental health services in the past year. This is well above the national prevalence.
- Suicide rates for the Quad Cities area) have increased from 13.9 annual average deaths per 100,000 population in 2010 – 2012 to 16.0 per 100,000 2017-2018.

**Goal: Reduce the number of suicides in Scott and Rock Island Counties.**

**Impact Measures: GMC Davenport and GMC Silvis**

CHNA Impact Measures	CHNA Baseline	Target
Reduce the incidence of suicide in Scott and Rock Island Counties	16.0 per 100,000	0 suicides for a 6 month period in 2023 (a goal of the QC Zero Suicide Project) Or HP 2030 goal of ≤12.8

**Actions GMC Davenport intends to take to address this health need:**

Strategies	Timeline			Committed Resources		Potential Partners
	Yr1	Yr2	Yr3	Hospital	Other Resources	
Continue to work with the Vera French Community Mental Health Center (Davenport, IA) to support key programs for children and teens – particularly those relating to suicide	X	X	X		Funding from Genesis Philanthropy (now Better Health Foundation)	Vera French Community Mental Health Scott County Juvenile Justice dept. Community Health Care Area schools

Strategies	Timeline			Committed Resources		Potential Partners
	Yr1	Yr2	Yr3	Hospital	Other Resources	
Provide emergency/crisis care in the ED	X	X	X	Expand ED facilities to better service persons with mental illness  Staff the ED with social workers and nurses to conduct assessments and provide placements		Vera French Community Mental Health Center Police departments Ambulance services Quad Cities Behavioral Health Coalition
Maintain inpatient behavioral health units and programs for adults and children/adolescents	X	X	X	Continue to provide inpatient programs for adults and children/adolescents		Vera French Community Mental Health Center
Support Family Connects Program – identify and assist moms with postpartum depression	X	X	X	Provide funding and staff support		Vera French Community Mental Health Center Scott County Kids Home health agencies Providers
Support the Quad Cities Behavioral Health Coalition’s Zero Suicide Initiative	X	X	X	Provide funding and staff support		QCHI Mental health providers Health care providers

**Actions GMC Silvis intends to take to address this health need:**

Note: GMC Silvis does not have a behavioral health unit. The providers and staff at Silvis work closely with the Robert Young Community Mental Health Center to ensure patients get the right treatment in the right location.

Strategies	Timeline			Committed Resources		Potential Partners
	Yr1	Yr2	Yr3	Hospital	Other Resources	
Identify patients with mental health needs in the ED and refer to appropriate mental health programs	X	X	X	Provide funding and staff support	Access to telehealth mental health services	Robert Young Community Mental Health Center

Strategies	Timeline			Committed Resources		Potential Partners
	Yr1	Yr2	Yr3	Hospital	Other Resources	
Support Family Connects Program – identify and assist moms with postpartum depression	X	X	X	Provide funding and staff support		Robert Young Community Mental Health Center Home health agencies Providers
Support the Quad Cities Behavioral Health Coalition’s Zero Suicide Initiative	X	X	X	Provide funding and staff support		QCHI Mental health providers Health care providers

**Plan to evaluate the impact:**

Both hospitals will work with the Quad City Behavioral Health Coalition to evaluate the progress made by the Zero Suicide Initiative at the end of each year. Successes and opportunities for improvement will be identified and used to modify the plans for the coming year.

## CHNA IMPLEMENTATION STRATEGY

### Fiscal Years 2022 - 2024

<b>Hospital Facility:</b>	<b>GMC Davenport and GMC Silvis</b>
<b>CHNA Significant Health Need:</b>	<b>Nutrition, Physical Activity and Weight and Diabetes</b>
<b>CHNA Reference: Page 137 Diabetes; 152 Nutrition, Physical Exercise and Weight</b>	<b>Prioritization #: 3</b>

#### Basic Description of Need:

##### Nutrition

- 26.9% of the Scott County CHNA respondents and 26.6% of Rock Island County respondents reported they consumed five or more servings of fruits/vegetables per day. This is lower than the national rate of 32.7%.
- This rate is lower for very low income (22.4%) and low income (23.7%) as compared to mid/high income persons (29.5%).
- These results may be due to a lack of: information about how to choose healthy foods; access to health foods, or funds to purchase healthy foods.

##### Physical Activity

- Twenty-six (26%) percent of Scott County respondents meet the physical activity recommendations set by the US Department of Health and Human Services. Healthy People 2030. This compares to 19.8% of Rock Island County CHNA respondents.
- The percentage of people in the combined Scott and Rock Island Counties has remained flat at approximately 23% from 2018 to 2021

##### Weight

- Being overweight contributes to a number of chronic health conditions such as diabetes, heart disease and stroke.
- Prevalence of total overweight (overweight BMI value of  $\geq 25$  BMI and obese  $\geq 30$ ) is 72.3% for Scott County and 76.6% for Rock Island County. This is significantly higher than the US rate of 61%.
- This has been steadily increasing over time from 64.1 to 74.2 for the Quad Cities area (combined Scott and Rock Island Counties)
- Prevalence of obesity is 42.1% in Scott County and 40.5% in Rock Island County.; greater than the US rate of 31.3%.
- Prevalence of obesity is higher for low income populations (50.7% very low income and 40.2% for low income persons), black populations 48%) and women (44.6%)

##### Diabetes

- Poor nutrition, lack of regular exercise and obesity are key contributing factors to diabetes. The CHNA found that 11.6% of Scott County respondents were diabetic as were 15.1% of the Rock Island County respondents. The prevalence of diabetes is higher among very low income individuals (18.1%) and low income persons (15.3%) and black populations (17.0%).

**Goal: Establish the Genesis Food Pharmacy providing healthy food and nutritional counseling to patients with elevated AICs and their families.**

**Impact Measures: GMC Davenport and GMC Silvis**

CHNA Impact Measures	CHNA Baseline	Target
Increase the number served through Food Pharmacy	0	30 patients and their families by end of year 1.
Reduction in AIC levels among participants; Score < 9 of those enrolled in the program	0	avg A1C reduction across all participants of 1.0-2.0%
Reduction in high blood pressure among participants; Participants with BP >140/90 BP at enrolled in the program	0	Participants with BP >140/90 BP at enrollment 50% of these pts achieving <140/90

**Actions that Genesis Health System (GMC Davenport and Silvis) intends to take:**

Strategies	Timeline			Committed Resources		Potential Partners
	Yr1	Yr2	Yr3	Hospital	Other Resources	
Establish and operate the Genesis Food Pharmacy	X	X	X	Provide staff (manager and dietician) to manage and operate the food pharmacy; provide nutritional counseling; funding; and marketing	Grants Community volunteers	Health care providers HyVee grocery stores Riverbend food bank
Work with physicians to help them understand how to “prescribe” the food pharmacy for their diabetic patients with elevated AICs (score greater than 9) that are food insecure. Eligible participants will receive a prescription from their providers to go to the Food Pharmacy. Once there, participants	X	X	X	Provide staff (manager and dietician) to manage and operate the food pharmacy; provide nutritional counseling; funding; and marketing	Grants Community volunteers	Health care providers HyVee grocery stores Riverbend food bank

Strategies	Timeline			Committed Resources		Potential Partners
	Yr1	Yr2	Yr3	Hospital	Other Resources	
can shop for healthy foods in keeping with their dietary restrictions and receive nutritional counseling from a dietician. Food will be provided for the entire family.						

**Plan to evaluate the impact:**

Genesis (administrative fellow) will evaluate the program in terms of the above metrics and report to leadership. Successes and opportunities for improvement will be used to modify the program.

## CHNA IMPLEMENTATION STRATEGY Fiscal Years 2022 - 2024

<b>Hospital Facility:</b>	<b>GMC Davenport and GMC Silvis</b>
<b>CHNA Significant Health Need:</b>	<b>Access to Health Care</b>
<b>CHNA Reference: Page 189</b>	<b>Prioritization #4</b>

**Brief Description of Need:**

- Approximately 41% of Scott and 43% of Rock Island County residents reported they had some type of difficulty or delay in obtaining health care services in the past year. This is higher than the US reported percentage of 35% and has gotten worse over time.
- Experiencing a difficulty or delay in receiving care is worse for very low income persons (62.1%) and low income individuals (59%). Only 35.5% of mid to high income persons reported difficulties or delays.
- More minority persons also reported difficulties or delays: Black 51.8%, Hispanic 52.4% as compare to white 41%.
- Barriers to access include: getting a doctor’s appointment (23.4% Quad Cities area respondents) inconvenient office hours (reported by 13.5% Quad Cities area), cost of prescriptions (12.3%) and lack of transportation (8.6%).
- Ease of obtaining local health care services considered to be “fair/poor” is reported by 11.5% of Scott County CNHA survey respondents as compared to 15.3% of Rock Island County respondents. Ease of obtaining children’s health care services is “fair/poor” was reported by 16% of Scott County residents and 19.9% of Rock Island County residents.

**Goal: Improve access to primary care and specialists services.**

**Impact Measures: GMC Davenport and GMC Silvis**

CHNA Impact Measures	CHNA Baseline	Target
Number of providers recruited to Genesis Health Group	New Measure	Increase 10% from baseline
Number of new sites and sites with expanded hours	New Measure	One per year

**Actions GMC Davenport intends to take to address the health need:**

Strategies	Timeline			Committed Resources		Potential Partners
	Yr1	Yr2	Yr3	Hospital	Other Resources	
Continue to provide 421-DOCS which connects callers without a primary care provider to those	X	X	X	Funding Staff support/time		



Strategies	Timeline			Committed Resources		Potential Partners
	Yr1	Yr2	Yr3	Hospital	Other Resources	
Genesis Health Group providers accepting new patients. Ongoing	X	X	X	Funding Staff support/time		
Continue to recruit primary care providers and specialists to Scott and Rock Island Counties. Ongoing	X	X	X	Funding Staff support/time		
Develop and implement plans to expand clinic office hours and add new practice sites in growing population areas by 2025	X	X	X	Funding Staff time Capital		Community Health Care Health care providers
Implement strategies to retain key primary care providers	X	X	X	Funding Staff time		Health care providers
Expand access via telehealth. Ongoing	X	X	X	Funding Staff time		

**Actions GMC Silvis intends to take to address the health need:**

Strategies	Timeline			Committed Resources		Potential Partners
	Yr1	Yr2	Yr3	Hospital	Other Resources	
Continue to provide 421-DOCS which connects callers without a primary care provider to those	X	X	X	Funding Staff support/time		
Genesis Health Group providers accepting new patients. Ongoing	X	X	X	Funding Staff support/time		

Strategies	Timeline			Committed Resources		Potential Partners
	Yr1	Yr2	Yr3	Hospital	Other Resources	
Continue to recruit primary care providers and specialists to Scott and Rock Island Counties. Ongoing	X	X	X	Funding Staff support/time		
Develop and implement plans to expand clinic office hours and add new practice sites in growing population areas by 2025	X	X	X	Funding Staff time Capital		Community Health Care Health care providers
Implement strategies to retain key primary care providers	X	X	X	Funding Staff time		Health care providers
Expand access via telehealth. Ongoing	X	X	X	Funding Staff time		

**Plan to evaluate the impact:**

Genesis Health Group will provide data at the end of each year regarding the number of providers recruited and the number of new sites/sites with expanded hours of service. Successes and opportunities for improvement will be used to modify the program.

# Adoption of Implementation Strategy

On October 5, 2023, the Board of Directors for GMC Davenport and GMC Silvis reviewed the 2023-2025 Implementation Strategy for addressing the community health needs identified in the 2022 Community Health Needs Assessment. Upon review, the Board approved this Implementation Strategy and the related budget.

  
\_\_\_\_\_  
Name of President/CEO and or CFO

10/19/23  
\_\_\_\_\_  
Date