



MercyOne Des Moines Laboratory  
 1111 6<sup>th</sup> Avenue  
 Des Moines, IA 50314  
 T 515-247-4439  
 Toll Free 877-263-1622  
 F 515-643- 8832  
[www.mercyone.org/desmoineslab](http://www.mercyone.org/desmoineslab)

## Des Moines Laboratory Update

Date: December 15, 2022

### MercyOne Des Moines Laboratory Patient Service Center Holiday Hours

The MercyOne Des Moines Laboratory Patient Service Centers will be adjusting their hours during the upcoming holiday weeks. Please be mindful of these changes as you schedule patients for procedures around the Christmas and New Year holiday weekends.

December						
Sunday	Monday	Tuesday	Wednesday	Thursday	Friday	Saturday
18	19	20	21	22	23 Open 7:00am - 3:00pm	24 Closed
25 Closed	26 Closed	27	28	29	30 Open Normal Hours	31 Closed

January						
Sunday	Monday	Tuesday	Wednesday	Thursday	Friday	Saturday
1 Closed	2 Closed	3	4	5	6	7 Closed

**MercyOne Des Moines Laboratory**  
 411 Laurel St., Suite A265  
 Des Moines, Iowa

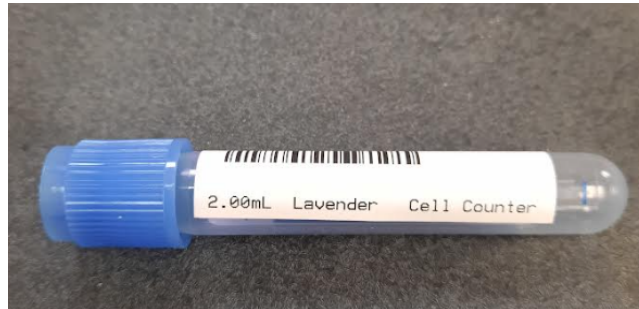
**MercyOne Clive Laboratory**  
 1601 NW 114th St., Suite 134  
 Clive, Iowa

**MercyOne Ankeny Laboratory**  
 800 E. First St., Suite 1400  
 Ankeny, Iowa

## Blood Tube Labeling

When labeling blood tubes, please apply the label directly under the cap of the tube. Labels should be positioned lengthwise with the patient name reading left to right from the cap of the tube. The label must be straight and without folds or wrinkles and be placed as close to the cap as possible. These steps will increase efficiency by allowing our automation system to process specimens, avoiding a delay in testing.

See the image below as a guide for proper tube placement.



Thank you for choosing MercyOne Des Moines Laboratory.