

# Acute Inpatient Rehabilitation Unit

The acute inpatient rehabilitation team at MercyOne Dubuque Medical Center helps patients live their lives to the fullest, despite disabilities caused by trauma, illness, neurological deficits or disease. Patients and their families participate in a customized team approach based on individual goals.

## Why do we stand above other rehab units?

- MercyOne's acute inpatient rehabilitation unit is accredited by the Commission for Accreditation of Rehabilitation Facilities for inpatient rehabilitation and the pediatric specialty program.
- MercyOne's rehabilitation unit achieves more positive change between the patient's admission and discharge than other rehabilitation units in the nation (based on functional independence measures).
- We proudly served 163 patients in 2019, ranging in age from 31 to 88 years.
- Over 84 percent of patients have returned to their home environment since leaving inpatient rehabilitation in the last year.
- The past year's average length of stay was 14.3 days.



## What Our Patients Are Saying

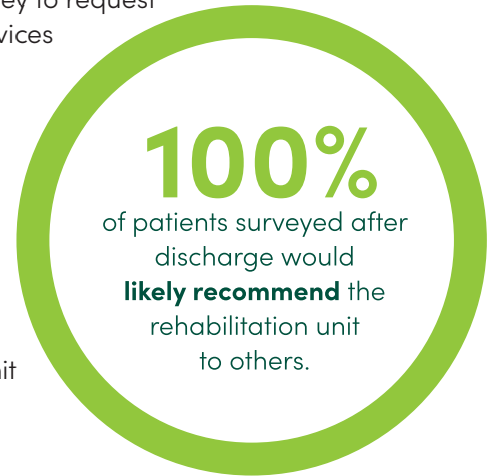
"I could not have been more fortunate to have you caring for me. **You are a wonderful team**—thoughtful and professional."

"Every single person from the dietary clerks to the CNAs, the therapists, the nurses, and even housekeepers were so kind and thoughtful. **I will always remember them.**"

## Patient Satisfaction

Shortly after discharge, patients are contacted to participate in a survey to request feedback about services they received at MercyOne's acute inpatient rehabilitation unit.

Of the respondents, 100 percent would likely recommend the rehabilitation unit to others.



## Admission Criteria

- Has presence of disability in motor function or cognitive process
- Is medically able to participate
- Requires 24-hour rehabilitation nursing services
- Requires minimum of two therapy services (PT, OT, SLP)
- Has the potential to participate in three hours of therapy, five days per week
- Has ability to make functional gains
- Has capacity to learn and willingness to participate

## CONTACT US

For information on admission to MercyOne's acute inpatient rehabilitation unit, call 563-589-8491 or 563-589-8164.