

# OneConnect

## Siouxland Provider Newsletter

### MercyOne Siouxland Medical Center welcomes medical director of cardiology

MercyOne welcomes Mir Rauf Subla, MD, FACC, FSCAI as the new medical director of cardiology to Siouxland’s only full-service heart and vascular center which provides procedures such as open-heart surgery and TAVR.

Dr. Subla is quadruple board-certified in internal medicine, critical care medicine, cardiology and interventional cardiology. He completed fellowships in heart failure at Cleveland Clinic, cardiovascular disease at Mayo Clinic and interventional cardiology at Duke University Hospital. He also holds an assistant professor of medicine position at Mayo College of Medicine and Science in the Division of

**“Open-heart surgery is something you will ONLY find in our region at MercyOne Siouxland Heart and Vascular Center. No other hospital in a 90-mile radius offers full comprehensive care like this including TAVR, open-heart surgery, and minimally invasive cardiac surgery. We are excited to partner with cardiology and cardiac surgery to determine the best course for our patients.”**

– Mir Rauf Subla, MD, FACC, FSCAI



Cardiology and Critical Care at Mayo Clinic.

“Every patient I see is a new book, is a new education for me, and is a little bit different,” said Dr. Subla. “It’s interesting to see a new patient, how they present with the same disease process but different symptoms, different presentations, and figuring out their course of treatment. When I can help them and see that huge relief for my patient and their family,

that’s really satisfying.”

Dr. Subla performs all major interventional procedures including TAVR, Mitra Clip, Watchmen, CardioMEMS and EKOS. MercyOne Siouxland Heart and Vascular Center brings together cardiologists, cardiothoracic surgeons and vascular surgeons with advanced technology to provide comprehensive care in a state-of-the-art facility.

### Providers at MercyOne Siouxland Heart and Vascular Center



**Mir Rauf Subla, MD**  
Medical Director of  
Cardiology



**Giovanni B. Ciuffo, MD**  
Medical Director of  
Cardiothoracic Surgery



**Glynne Edwards, MD**  
Interventional Cardiologist



**Gary Chan, DO, PhD**  
General Cardiologist

## MercyOne Siouxland Medical Center opens inpatient geropsychiatric behavioral health care unit

In October, our region unveiled its newest addition to patient care: the MercyOne Siouxland Geriatric Behavioral Health Care unit.

While adult behavioral health care has long been offered, and continues to be, at MercyOne Siouxland Medical Center, an inpatient geriatric behavioral health care unit has been previously unavailable in the area and is the only inpatient geropsychiatric unit in Western Iowa.

The latest numbers show the length of stay on the geropsychiatric unit to be above 10 days. This has remained consistent since its inception.

"This higher length of stay shows the amount of time we are dedicating to the senior population," said Carla Smith, MA, MSW, LISW, Behavioral Health Program Director. "This aging

and vulnerable group needs extended time to regulate psychiatric disorders and manage medications."

Since October, the geriatric program has received referrals from 38 out of 99 counties in Iowa as well as three counties in Nebraska and one in Minnesota.

MercyOne Western Iowa also continues to operate our adult behavioral health care unit which can house 11 adult patients. With a complete remodel, this area transformed to a ligature-free safe zone for adult patients ages 18-65 who have no additional acute care,



Carla Smith



Jewel Sheley

medical or surgical needs.

"The Midwest is very limited in services for any type of behavioral health. It's a very underserved population," said Jewel Sheley, BSN, RN, MercyOne behavioral health unit nurse manager. "So this is a critical service for our aging and vulnerable population."

Admission to our geriatric behavioral unit will be offered to patients who are 65 years old and older who require active treatment of a psychiatric disorder. Patients referred to the geropsychiatric unit who are under the age of 65 years old will be evaluated on a case-by-case basis.

## MercyOne launches Military and Veterans Health Care Initiative

Honoring, recognizing and personalizing care for our military veterans and their families is the goal behind Military and Veterans Health Care. It was launched on Veterans Day in Western Iowa with a ceremony held at MercyOne Siouxland Medical Center. Colleagues representing the five branches of our military spoke about what it means to them.

Twenty-two million veterans and military service members may bear the invisible scars of a dangerous "working environment." Many of those veterans or their family members receive care in our ministry, but too often we have no knowledge of their service. This care model changes that. Our colleagues are undergoing specific training to identify and care for military veterans, active duty and family members of the United States Armed Services.

Through Military and Veterans Health Care, MercyOne



Siouxland Medical Center's patient access team has recognized 1,807 individuals in our first 90 days that are either veterans themselves or are family members of veterans. The team is the first stop to initiate the conversations and pay veterans and their families the personalized care and respect they deserve.

The care model will officially be launched externally on May 26.

## MercyOne Siouxland Medical Center nursing leadership



**Vanessa Morgan**  
 Director of Process Improvement/  
 Nursing Projects  
[Vanessa.Morgan@mercyhealth.com](mailto:Vanessa.Morgan@mercyhealth.com)



**Chris Hawkins**  
 Director of Emergency Services, Critical Care and Respiratory  
[Chris.Hawkins@mercyhealth.com](mailto:Chris.Hawkins@mercyhealth.com)



**Johnny Garza**  
 Manager of Emergency Services  
[Johnny.Garza@mercyhealth.com](mailto:Johnny.Garza@mercyhealth.com)



**Lea Mathison**  
 Trauma and Stroke Program Manager  
[mathisonl@mercyhealth.com](mailto:mathisonl@mercyhealth.com)



**Abbie Fahrendholz**  
 ICU and Respiratory Manager  
[Abbie.Fahrendholz@mercyhealth.com](mailto:Abbie.Fahrendholz@mercyhealth.com)



**Shanna Mueggenberg**  
 Director of Surgical Services  
[Shanna.Mueggenberg@mercyhealth.com](mailto:Shanna.Mueggenberg@mercyhealth.com)



**Matthew Marks**  
 Business Manager of Surgical Services  
[marksml@mercyhealth.com](mailto:marksml@mercyhealth.com)



**Lacey LaScala**  
 Manager of Surgery  
[lascallj@mercyhealth.com](mailto:lascallj@mercyhealth.com)



**Daryl Reicks**  
 Manager of Same Day Surgery, Ambulatory and PACU  
[Daryl.Reicks@mercyhealth.com](mailto:Daryl.Reicks@mercyhealth.com)



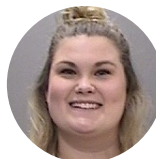
**Sam LaScala**  
 Digestive Health & Central Processing Manager  
[Samantha.LaScala@mercyhealth.com](mailto:Samantha.LaScala@mercyhealth.com)



**Wendy Prins**  
 Director of Inpatient Nursing  
[Wendy.Prins@mercyhealth.com](mailto:Wendy.Prins@mercyhealth.com)



**Samantha Cain**  
 Interim General Medical Nurse Manager  
[Samantha.Cain@mercyhealth.com](mailto:Samantha.Cain@mercyhealth.com)



**Allie Knodell**  
 Stepdown and Tele Clinical Nurse Manager  
[Alexis.T.Savage@mercyhealth.com](mailto:Alexis.T.Savage@mercyhealth.com)



**Kelly Crosgrove**  
 Surgery/Urology Clinical Nurse Manager, Interim Manager of Rehab  
[Kelly.Crosgrove@mercyhealth.com](mailto:Kelly.Crosgrove@mercyhealth.com)



**Susan Gossett**  
 Interim Neuro/Ortho Nurse Manager  
[Susan.Gossett@mercyhealth.com](mailto:Susan.Gossett@mercyhealth.com)



**Kathy Tague**  
 General Medical and Stepdown Nurse Supervisor  
[taguek@mercyhealth.com](mailto:taguek@mercyhealth.com)



**Tara Menno**  
 Administrator of Skilled Care, Interim DON Skilled Care  
[Tara.Menno@mercyhealth.com](mailto:Tara.Menno@mercyhealth.com)



**Kara Garcia**  
 Rehab Nurse Manager  
[Kara.Garcia@mercyhealth.com](mailto:Kara.Garcia@mercyhealth.com)



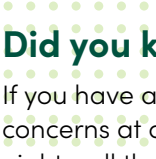
**Jewel Sheley**  
 Manager for Nursing Services, Adult and Geriatric Behavioral Health  
[sheleyj@mercyhealth.com](mailto:sheleyj@mercyhealth.com)



**Kirstin Lane**  
 Supervisor for Adult and Geriatric Behavioral Health  
[Kirstin.Barringer@mercyhealth.com](mailto:Kirstin.Barringer@mercyhealth.com)



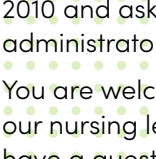
**Brenda Lewis**  
 Nursing Services Supervisor  
[Brenda.Lewis@mercyhealth.com](mailto:Brenda.Lewis@mercyhealth.com)



**Catie Krambeck**  
 Nursing Services Supervisor  
[Catherine.Krambeck@mercyhealth.com](mailto:Catherine.Krambeck@mercyhealth.com)



**Karen Meyer**  
 Nursing Services Supervisor  
[Karen.M.Meyer@mercyhealth.com](mailto:Karen.M.Meyer@mercyhealth.com)



**Tyler Hoogendoorn**  
 Nursing Services Supervisor  
[Tyler.Hoogendoorn@mercyhealth.com](mailto:Tyler.Hoogendoorn@mercyhealth.com)



**Julie Cardwell**  
 Patient Placement/ Bed Board Services  
[cardwelj@mercyhealth.com](mailto:cardwelj@mercyhealth.com)

### Did you know?

If you have a question or patient concerns at any time of the day or night, call the operator at 712-279-2010 and ask them to contact the administrator on call.

You are welcome to reach out to our nursing leaders should you have a question or patient concern.



# THANK YOU

We sincerely appreciate you and your commitment to transforming the health care of our communities.

Happy Doctors' Day